

Brilliant and Bright **LEXELL**

5690 Schaefer Ave, Suite E, Chino, CA 91710  
Main: 909-627-5777 Fax: 909-627-6722  
Email: sales@lexellinc.com Http: //www.lexellinc.com

# LEXELL

Brilliant and Bright

LED T8 Tubes LED Lamps  
LED Street Lights LED Traffic Lights  
LED Displays and other LED applications





**LEXELL**  
Brilliant and Bright

Promoting green lighting technology  
that's both energy and cost efficient

Brilliant and Bright **LEXELL**



## Introduction

### PROVIDING EFFICIENT LIGHTING DEVICES FOR HUMAN PROGRESS

Lexell is one of the world's leading LED technology companies. Headquartered in Chino, California, we conduct business worldwide. We are engaged in every aspect of the LED lighting industry; including manufacturing, marketing, and sales. We also invest in advanced lighting technologies.

### TECHNOLOGY

Technology is propelling our growth. We focus on technologies that help us develop and produce the very best LED lighting solutions for our customers. We are also investing in the development of emerging LED thermal management and driver technologies that will reduce the cost and increase the actual lifespan of our LED products, all while creating even greater energy savings.

### OUR GOAL

Our motto is "Light up the world". Every day, we strive to find newer, greener, and more cost-effective ways to light up the world.

### OUR COMMITMENT

We are committed to providing our customers with the very highest quality LED lighting products. All of our products are tested according to the strictest standards to ensure superior performance and reliability. In addition to ISO 9001:2008 and TS 16949:2009, we have obtained UL, cUL and ROHS certifications.



Our Clients



SIEMENS

TOECSTAR

Sunburst®

SONY

SEKISHIN

OPTO TECH

ANNAX,  
ekuna

scree<sup>n</sup>tech  
LED Technology

蘇州友捷

UOB  
大华银行

LEOTEK

SHOWA DENKO

TSA  
TRAFFIC SIGNALS & ACCESSORIES CO.

Kingston  
TECHNOLOGY  
COMMITTED TO MEMORY

TLTC

Hynetic  
HYNETIC ELECTRONICS PVT. LTD. Together We Conquer

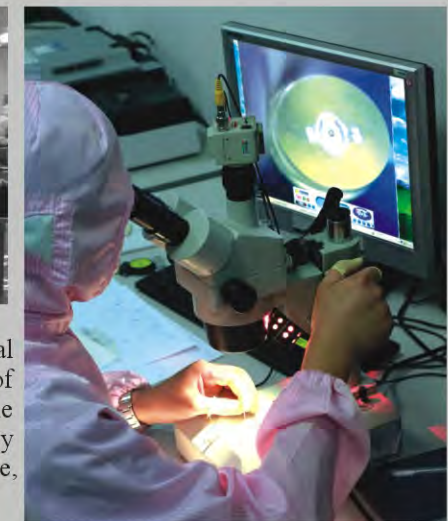
统一企业®

Cutting-edge Technologies



Technology is propelling our growth, We continuously challenge ourselves to improve our current patent technologies and find innovative ways to provide our customers with more efficient, environmentally friendly products. We work closely with universities in North America, Japan and China to foster innovation and cooperation in advanced lighting technology.

We are the exclusive holders of the patents and core technology to blend red, green and blue lights into true white light. Using this core technology, we were able to produce the first streetlight for which the color temperature can reach 3600K with a CRI that is close to that of sunlight.

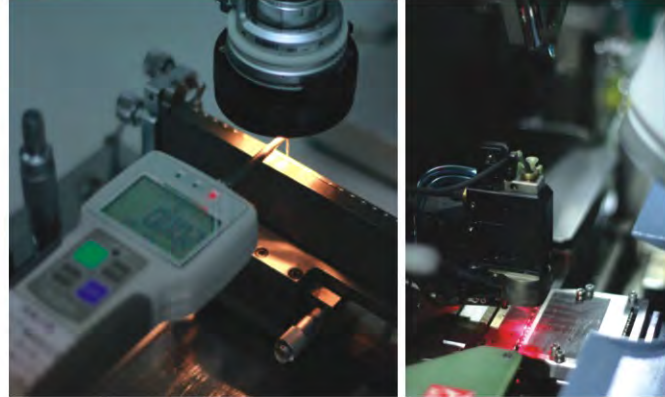
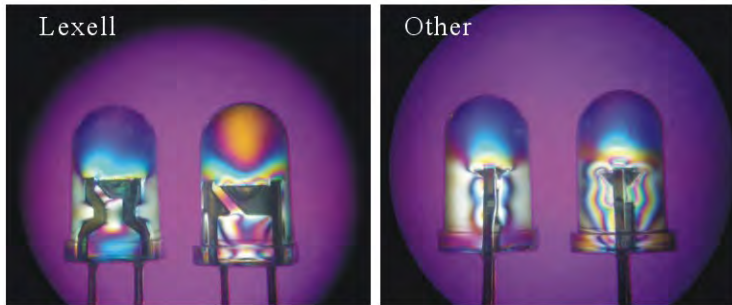


We are continually researching new methods of photovoltaic conversion, including optical simulation technology development. We successfully extracted the optical properties of LEDs and utilized optical simulation technology to create a product that achieved the maximum brightness of LEDs while minimizing power consumption. High efficiency photovoltaic conversion technology can keep LED chips working at lower temperature, and ensures the reliability and stability of our products.





## Test and Quality Control



### LIGHTING ELASTIC MOIRE TEST

- Layer Lines, Colorful Strips
- Layer Lines must be faded and simplified
- Main stress of XYZ axis reduced

### EFFECTS

- Gold Strings fall off
- Epoxy Resin is slightly cracked
- Binding Crash

### PRECISE THERMAL STRESS TEST AND ANALYSIS

Under Thermal Stress Test, our LEDs have high stability, fewer strips, and lower color temperature. This means that our LEDs have the perfect amount of stress control with a significantly lower probability of internal crashes.

Brilliant and Bright **LEXELL**

We not only obtained the international TS16949, we also adopted the US military's standard for quality testing and sampling, the ML-1094D.



Thermal Shock Test



High Temperature and High Humidity Test



Fatigue test at room temperature

## Innovative Products

LED T8 Tubes / LED Lamps / LED Street Lights / LED Traffic Lights / LED Displays and other / LED applications.

Brilliant and Bright **LEXELL**





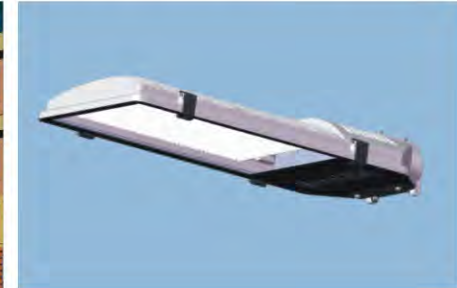
## LED RGB STREET LIGHTS

Our RGB (Red, Green, Blue) street lights are a combination of world patent leading RGB technology and superior design that the product is reliable 24 hours a day, 365 days a year. This is the first streetlight in the world to reach a color temperature of 3600K. The white light, a result of a perfect blend of red, green and blue light using our patented RGB technology, is able to reach a CRI very close to that of sunlight.

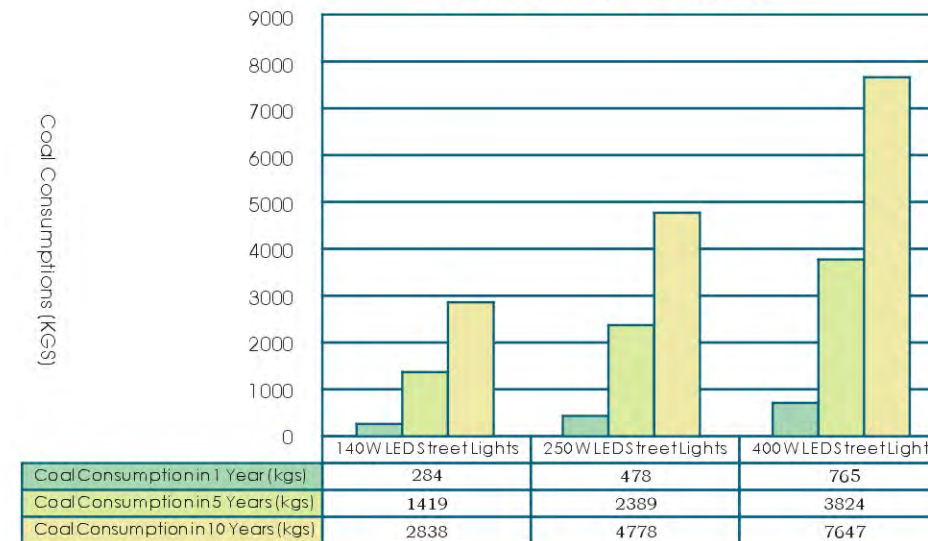
Designed to the highest industry and international standards, our products are made for both OEM and retrofit applications. Certified by the domestic inspection association "CLTC" "CNASL0128" "ILAC\_MRA" etc. Various world patents holding.



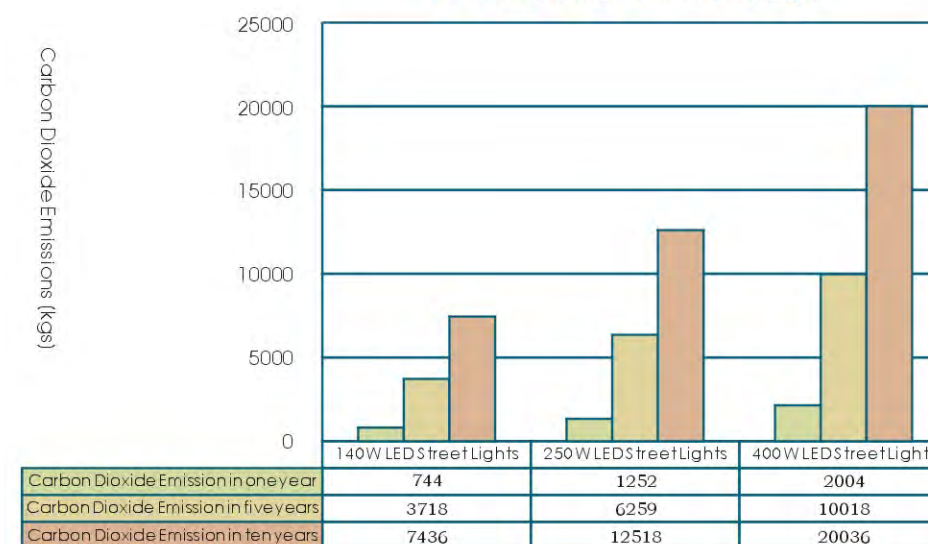
LIGHTING TYPE	RGB 80 Watt	RGB 104 Watt	RGB 140 Watt
MODEL	MA-LT80P-1	MA-LT104-1	MA-LT140-1
WATTAGE	80 Watts	104 Watts	140 Watts
AC INPUT	AC80~260V	AC80~260V	AC80~260V
CRI	>85	>85	>85
COLOR TEMPERATURE	3600 +/-300K 5000~8000K	3600 +/-300K 5000~8000K	3600 +/-300K 5000~8000K
LUMEN	5760 Lumens	7560 Lumens	10,080 Lumens
EFFICACY	72 L/W	72 L/W	72 L/W
CENTRAL LUX (9M)	38 Lux	23.68 Lux	34.62 Lux
COVER AREA	φ40 Meter	φ60 Meter	φ60 Meter
POWER FACTOR	>0.95	>0.9	>0.9
WATER RESISTANT	IP 65	IP 65	IP 65
RATED LIFE	50,000 Hours	50,000 Hours	50,000 Hours
WORKING TEMPERATURE	-20°C to + 60°C	-20°C to + 60°C	-20°C to + 60°C
WEIGHT	<10 kgs	<10 kgs	<10 kgs



Coal Consumptions in 1 year, 5 years and 10 years (KGS)



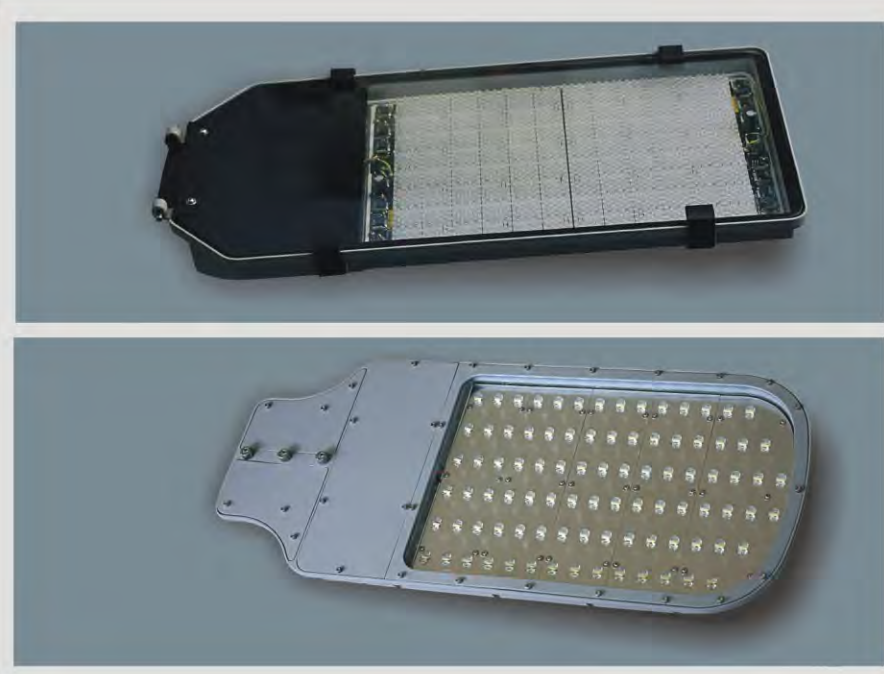
Carbon Dioxide Emissions (kgs)





LED STREET LIGHTS

- Increase energy savings and reduce environmental impact
- Reduce Maintenance Costs
- Provide a better quality of light for improved visibility and safety
- Long life & Low Failure rates



PERFORMANCE SPECIFICATIONS

LIGHTING TYPE	High Power Street light	High Power Street light
MODEL	MA-LC110N-1	MA-LC170N-1
WATTAGE	110 Watts	170 Watts
LENS ANGEL	60° * 120°	60° * 120°
AC INPUT	AC80~260V	AC80~260V
CRI	>75	>75
COLOR TEMPERATURE	5000 ~ 5700K	5000 ~ 5700K
LUMEN	≥6400 lm	≥10800 lm
EFFICACY	≥71L/W	≥71 L/W
POWER FACTOR	>0.90	>0.90
WATER RESISTANT	IP 65	IP 65
RATED LIFE	50,000 Hours	50,000 Hours
WORKING TEMPERATURE	-20°C~ 60°C	-20°C~ 60°C
HOUSING	Anodized Aluminum	Anodized Aluminum
SIZE (MM)	783 x348 x 123	783 x348 x 123
WEIGHT	12.5 kgs	14 kgs
WARRANTY	5 years	5 years

LED OUTDOOR SCREEN

Our LED display is made to the highest standards of quality. It not only overcomes the common problems of traditional LED displays, it is also a tremendous leap in innovation and craftsmanship. Our LED display is capable of balancing the red, green and blue color scale for every 16 bits to achieve the optimal gamma curve and make the display as close to a CRT Monitor color distribution as possible. Equipped with the Showa Denko Chip and integrated with our top LED optical sealing technology, our LED Display provides higher resolution, a wider viewing angle, better quality, and greater reliability than anything you have ever seen before. The LED display will maintain the original brightness and color saturation without glare or reflection-even in bright sunlight.

- **Rich Colors** / 281 Millions Colors
- **High Brightness** / 8000 NIT
- **High Color Levels** / 65536 Colors
- **High Color Saturation** / More than NTSC International Standard 71%
- **Reliability** / Life is more than 5 years
- **High Resolutions** / P5, P6, P7, 65, P10, P12 and above





**LED TRAFFIC LIGHTS**

LXELL Hi-Flux LED Traffic Lights generate consistent three-color lights and remain reliable in any conditions or temperatures. Product families include Full Ball, Arrow Signal and Pedestrian Signal lights. Our traffic lights are certified by ISO9001 and conform to EN12368 and US ITE Standards

- Up to 90% Energy Savings
- High Color Saturation
- Longer Life of 50,000 hours more
- Low voltage protection
- Dimming / Bright Mode
- OEM or Retrofit installation



**LED AUTO LIGHTS**

- High Stability
- Low Power Consumption
- Longer life of 50,000 hours more
- Conform to international auto standards TS 16949
- International Fire Resistant Rating
- OEM

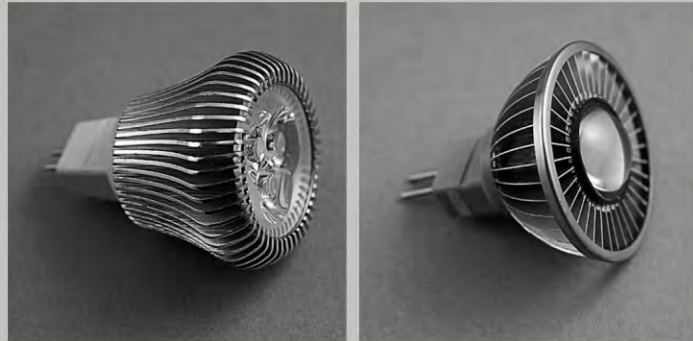








**LED MR16**



MODEL	MR16
WATTAGE	3W / 6W
INPUT VOLTAGE	AC~DC12V
	AC100~240V
DEGREE	<25°
COLOR TEMPERATURE	2500~7000K
OPERATING TEMPERATURE	-20°C~55°C
LIFE SPAN	>30,000 HOURS



**LED DOWNLIGHTS**

The downlight is designed to install into existing 6 inch housing or in new construction applications. Our patented "Cellular LED Array" is able to deliver beautiful light with excellent CRI for superior visibility. Advanced thermal management and electrical design protect light against short circuit and other electrical malfunctions.



MODEL	MA-0620-EG-001	MA-0620-EG002
WATTAGE	9 Watt	18 W
LUMENS	>648 Lumen	1400 Lumen
EFFICACY	90 lm/w	90 lm/w
COLOR TEMPERATURE	Warm White 2700K Day White 6500K	Warm White 2700K Day White 6500K
CRI	75 ~ 85	75 ~ 85
OPERATING TEMPERATURE	-10°C to -55°C	-10°C to -55°C
VOLTAGE	AC110~220V	AC110~220V
RATED LIFE	35,000 Hours	35,000 Hours
POLARITY	Bipolar protection	Bipolar protection
NET WEIGHT	0.62kg	0.62kg
INTERFACE	E27 or GU24	E27 or GU24
WARRANTY	3 Years	3 Years
ENVIRONMENT HUMIDITY	20%~85%	20%~85%
CERTIFICATION		



## LED PAR 30 AND PAR 38

The LED Par30 and Par38 are high quality replacement lamps which use only 10.6 Watts and 15.4 Watts. Special optics design creates a uniform beam and beautiful light comparable to conventional lighting sources. Free of UV and IR emissions, it has been manufactured in accordance with RoHS standards and contains no mercury.



### LIGHTING TYPE PAR30 PAR38

MODEL	MA-IDWP010-01	MA-IDWP015-01
EQUIVALENT SOURCE	Up to 75W Halogen	Up to 90W Halogen
WATTAGE	10.6 Watt	15.4 Watt
LUMENS	>700 Lumen	>1000 Lumen
COLOR TEMPERATURE	2800K ~ 3500K	2800K ~ 3500K
CRI	>80	>80
CENTRAL LUX	2600 Lux/1 Meter 610 Lux/2 Meter 260 Lux/3 Meter	8200 Lux/1 Meter 2500 Lux/2 Meter 1150 Lux/3 Meter
BEAM SPREAD	300	300
OPERATING TEMPERATURE	-20°C ~ 40°C	-20°C ~ 40°C
BASE	E26	E26
HOUSING	Aluminum	Aluminum
VOLTAGE	85~265V	85~265V
RATED LIFE	50,000 Hours	50,000 Hours
WARRANTY	5 years	5 years

## WALLPACK

- Energy Savings up to 60%
- Protect the environment and Reduce Maintenance Costs
- Provide a better quality of light for improved visibility and safety
- Long life & Low failure rate

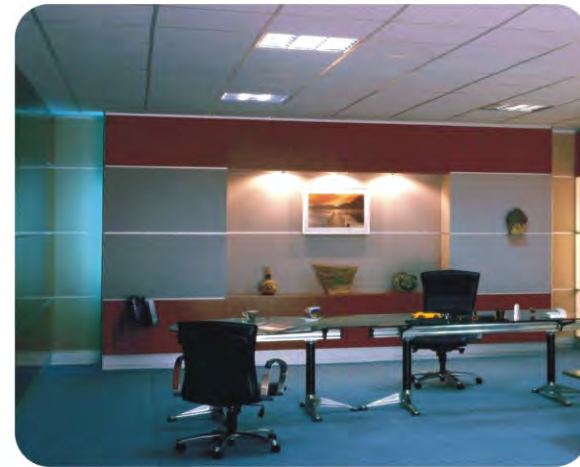
MODEL	MA-IDCP024S-01
WATTAGE	24 Watt
LUMENS	>1300 Lumen
COLOR TEMPERATURE	5000K ~ 7000K
CRI	>80
BEAM SPREAD	300
OPERATING TEMPERATURE	-20°C ~ 40°C
SIZE (MM)	225 x 185 x 158
HOUSING	Anodized Aluminum
VOLTAGE	110~220V
WATER RESISTANT	IP65
RATED LIFE	50,000 Hours
WARRANTY	3 years





## FLAT LOWBAY

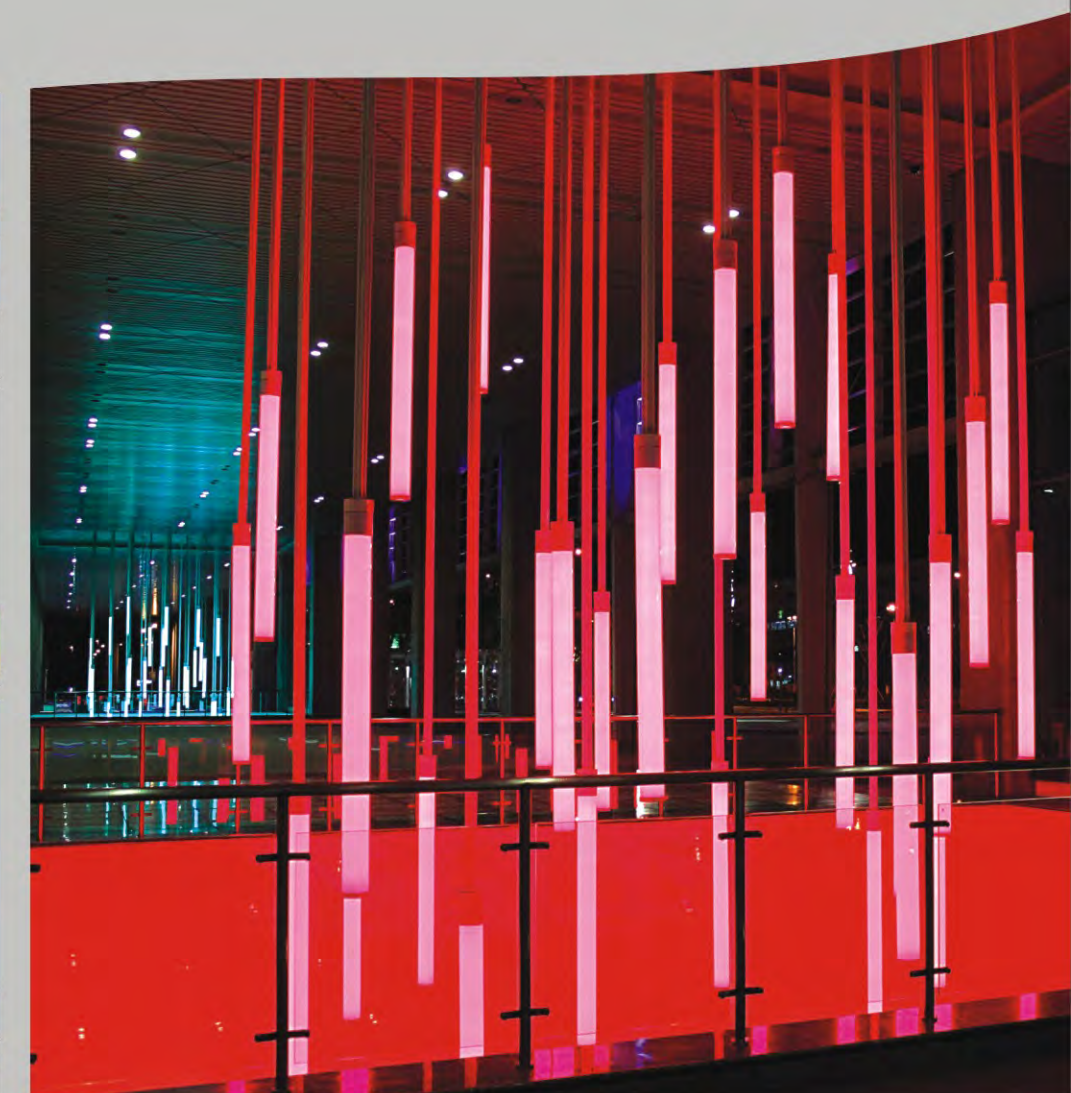
The LEXELL Flat LowBay is the perfect combination of style and innovation. Our Flat LowBay is perfect for use in warehouses, parking lots, showrooms, gas stations and more. The excellent CRI provides superior visibility, and the compact, lightweight design makes the Flat LowBay ideal for different mounting options including pendant, slope and surface.



MODEL	Model MA-IPTL090S-01
WATTAGE	90 Watt
LUMENS	7000 Lumen
EFFICACY	78 lm/w
COLOR TEMPERATURE	5300 ~ 5600K
CRI	80
LIGHTING ANGER	60 Degree
OPERATING TEMPERATURE	-35°C ~ 60°C
POWER FACTOR(PFC)	0.967
VOLTAGE	AC 90 ~277V
RATED LIFE	50,000 Hours
HOUSING	Aluminum
LENS	Optical grade glass
MOUNTING OPTIONS	Pendant, Slope, Surface
DIMENSIONS	322 mm x 324 mm
NET WEIGHT	6 kgs
WARRANTY	5 Years
ENVIRONMENT	Ip65
CERTIFICATIONS (DRIVER)	  

## LED CRYSTAL LIGHTS

- Energy Savings up to 60%
- Higher CRI for better visibility and safety
- Customized Size and Colors
- Common Applications include Park, Plaza, Communities, etc.,





## Our Clients

Sony has used our LED display and purchased our streetlights for their factory. Sekinshin used our LED parts and screen modules. Japan Showa Denko used our traffic signal lights and outdoor LED products for their factory. We have produced indoor LED applications to the specifications of the Dutch construction firm P2Group; these have been used widely in both Nokia and Nike flagship stores. Our company also designed and manufactured LED Lighting Products under Germany ANNAX requirements for Siemens' Rail Transportation Sector.



**LEXELL**  
Brilliant and Bright  
[www.lexellinc.com](http://www.lexellinc.com)

